

Sainsbury's Tea

Gently fold along the crease lines

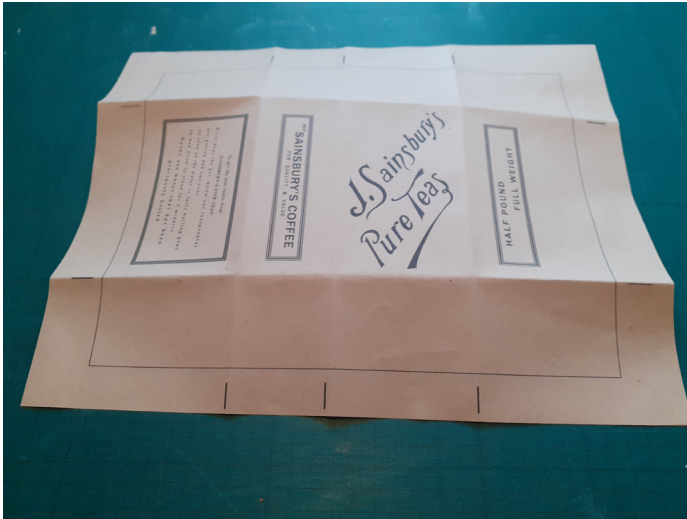


Fig 2

Once creased, trim out the tea packet - trimming inside the black line. Fold as in Fig 3. This will indicate where to glue.

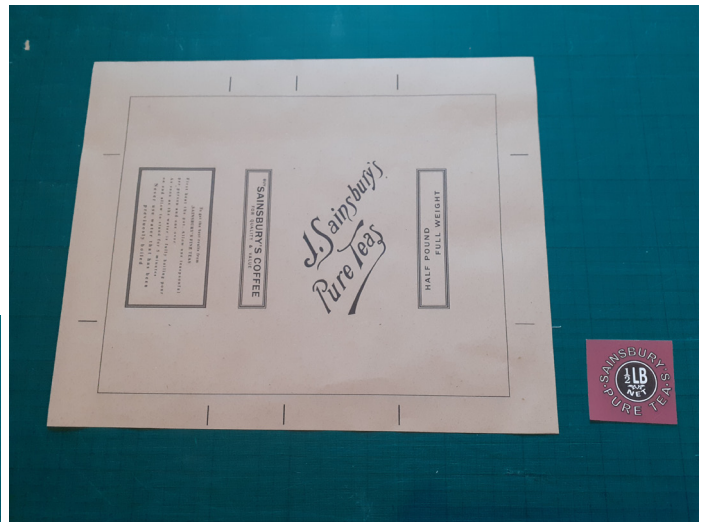


Fig 1



Fig 3

Glue!

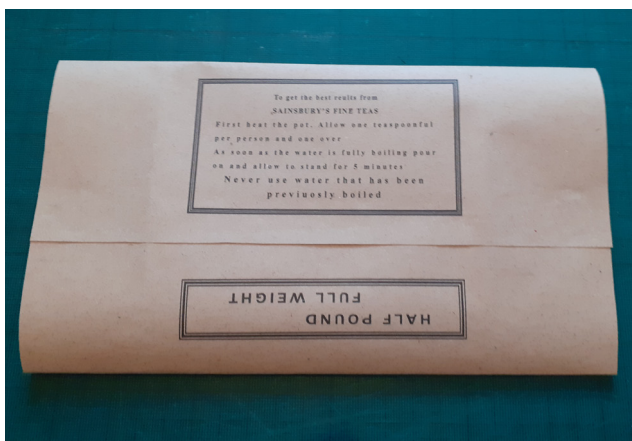


Fig 4

Sainsbury's Tea cont'd

Fig 5

The package should look like Fig 5



Fig 6



To help fold the bottom, stack up 2 normal sized tins (Fig 6) and slip over the packaging.

Fig 7

Fig 7



Then fold opposite sides in turn and Glue (Fig 8 and 9)

Fig 8



Fig 9



Once the glue has dried, turn over and fill - dried peas work well - fold the top over like the bottom and seal with the sticker

Fig 10

